

S.E. 1/4
SECTION 26, T.6N., R.2W., S.L.B. & M.

IN WEST HAVEN CITY

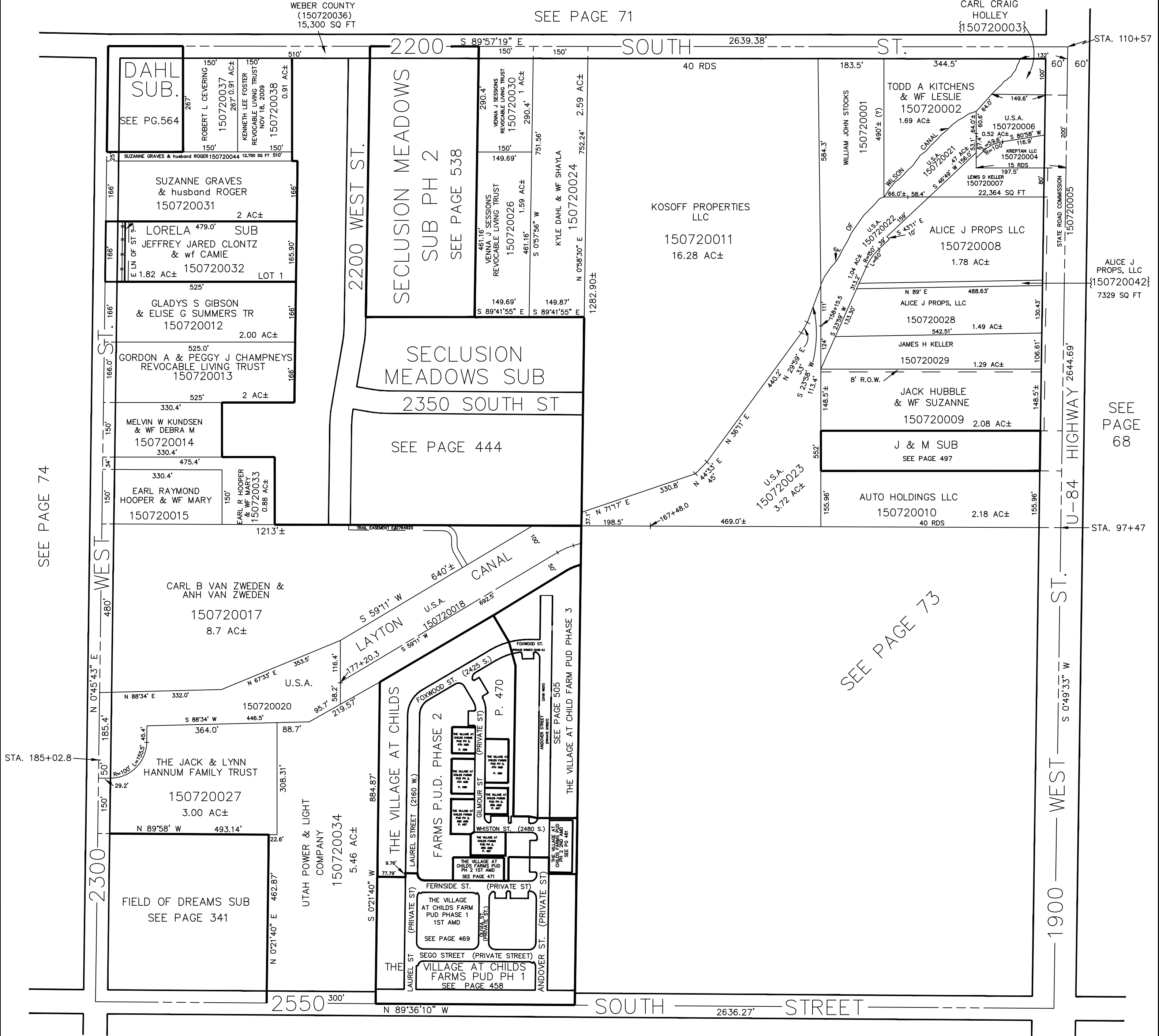
TAXING UNIT: 277

SCALE 1" = 200'

WEBER COUNTY
(150720036)
15,300 SQ FT

SEE PAGE 71

CARL CRAIG
HOLLEY
{150720003}



SEE PAGE 74

ALICE J PROPS, LLC
{150720042}
7329 SQ FT

SEE PAGE 68

SEE PAGE 73

STA. 185+02.8

STA. 97+47

SEE PAGE 94

SEE PAGE 95